

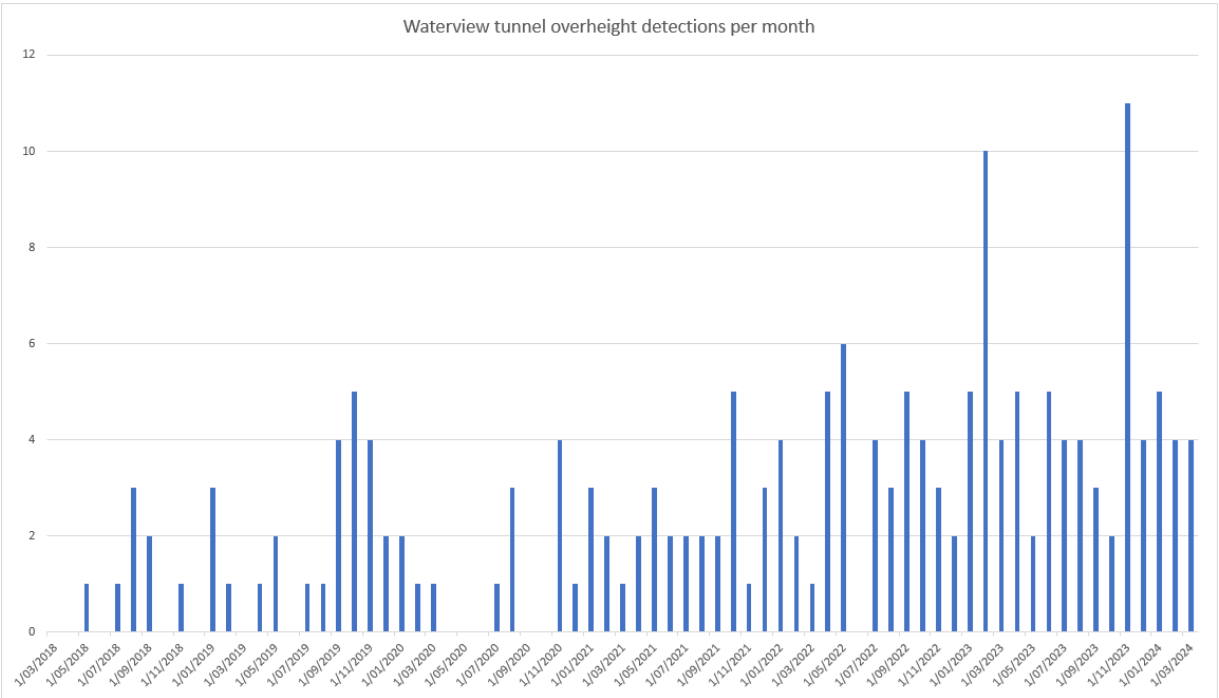
Over Height Detection System

June 2024

Paul Geck

Waterview Tunnel Messaging

| Year | Number of over-height warning trigger incidents |
|---------|-------------------------------------------------|
| 2018/19 | 12 |
| 2019/20 | 24 |
| 2020/21 | 15 |
| 2021/22 | 30 |
| 2022/23 | 51 |
| 2023/24 | 53 |



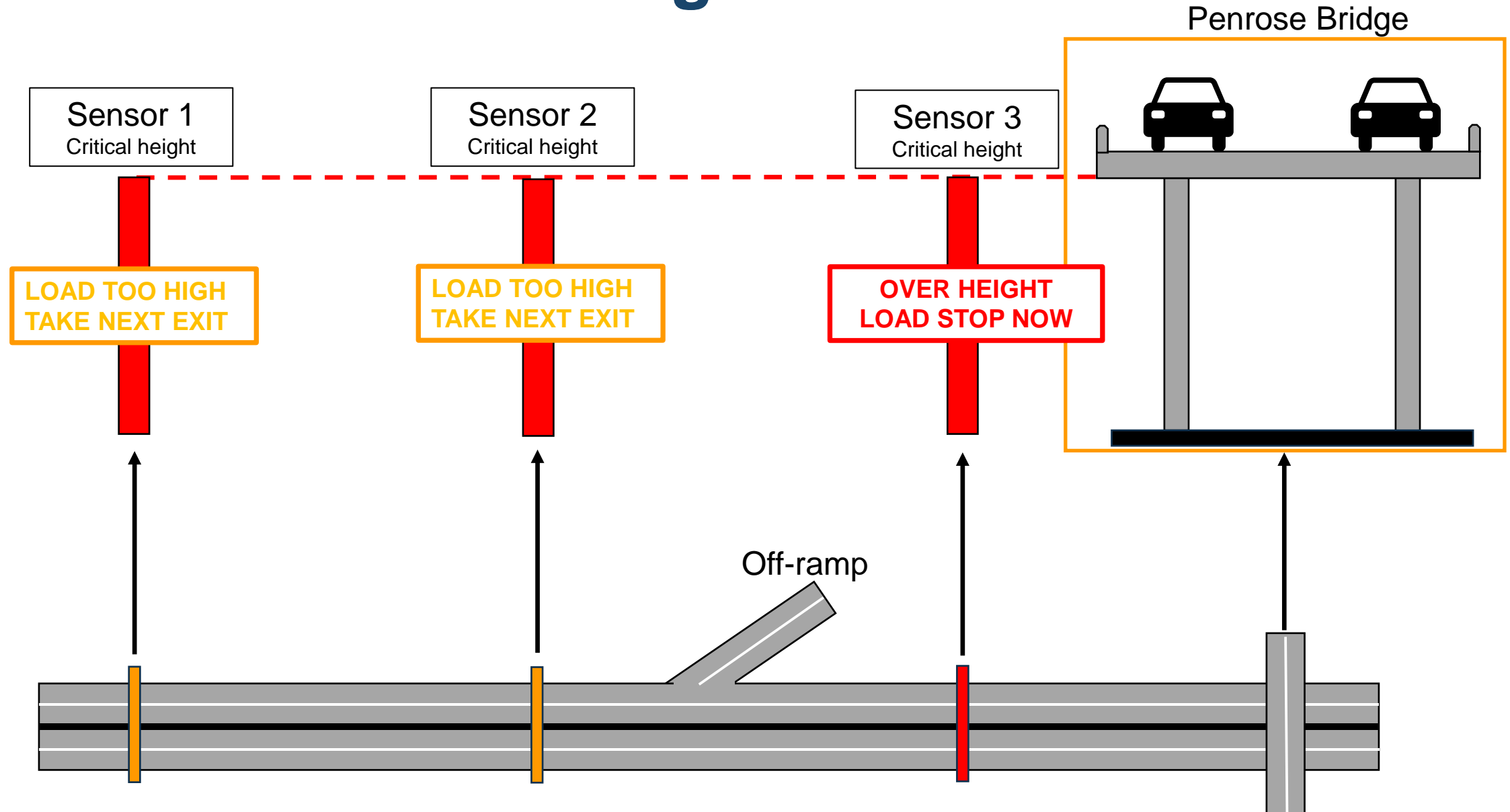
Waterview Tunnel Messaging

- **For SH16 Eastbound:**
- **What is the system made up of;**
 - Stage 1 detection and message before the causeway, this displays the message “OVERHEIGHT AVOID SH20.”
 - Stage 2 detection and message on the SH16EB-SH20SB ramp, this displays the message: “OVERHEIGHT PULL OVER”
 - Stage 3 message and barriers at the tunnel portal, this displays the message: “INCIDENT AHEAD TUNNEL CLOSED DO NOT PROCEED.”
- **For SH16 Westbound:**
- **What is the system made up of;**
 - Stage 1 detection and message between St Lukes Rd and Carrington Rd, this displays the message “OVERHEIGHT AVOID SH20”
 - Stage 2 detection and message on the SH16WB-SH20SB ramp. This displays the message: “OVERHEIGHT PULL OVER”
 - Stage 3 displays the message: “INCIDENT AHEAD TUNNEL CLOSED DO NOT PROCEED” and has barriers at the tunnel portal

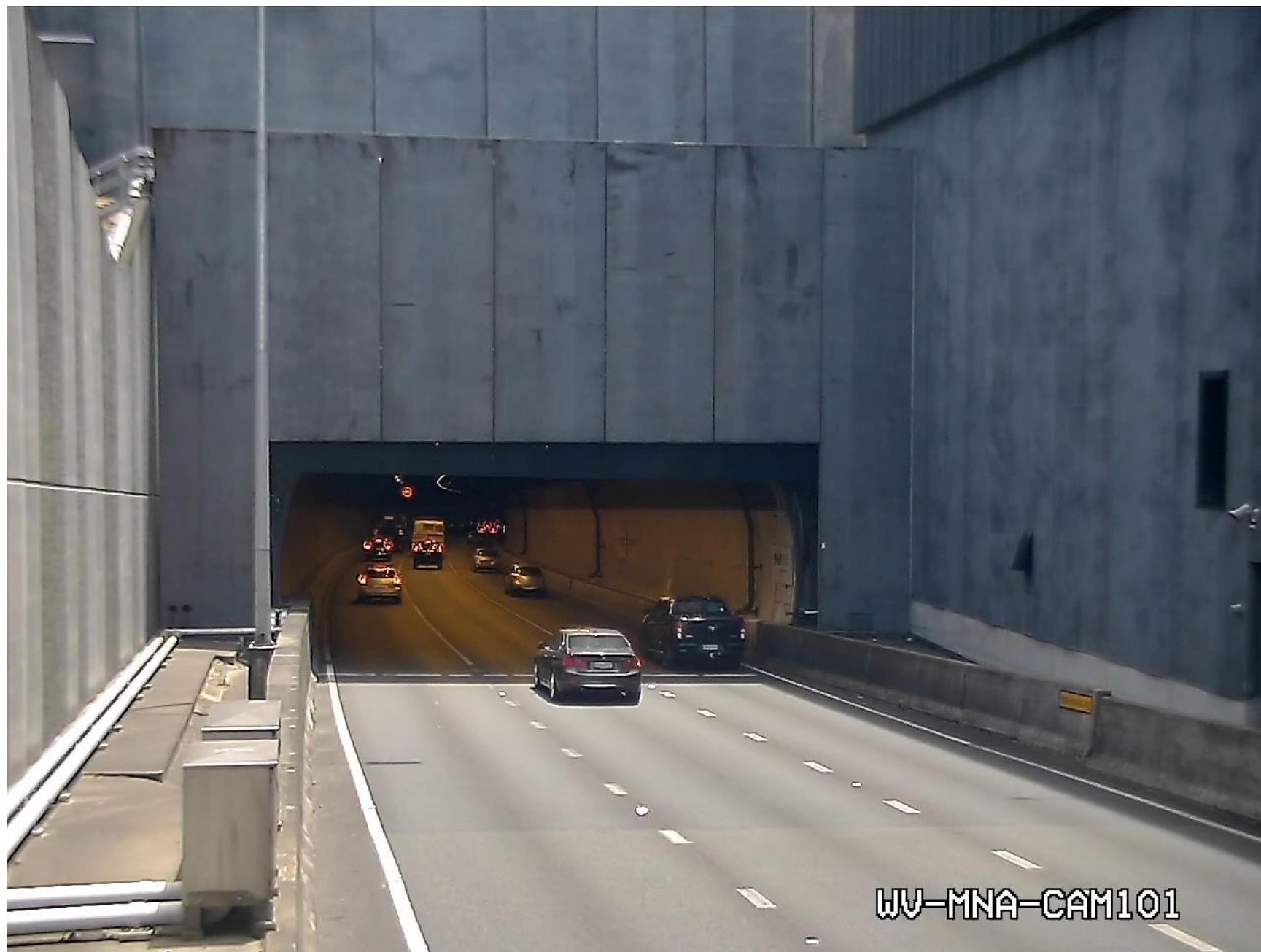
Waterview Tunnel Messaging

- ***For SH20 Northbound:***
- ***What is the system made up of;***
 - Stage 1a detection and message at May Rd overpass, this displays the message “OVERHEIGHT EXIT LEFT”
 - Stage 2a detection and message right after Maioro St off ramp, this displays the message “OVERHEIGHT PULL OVER”
 - Stage 2b detection and message at Richardson Rd overpass, this displays the message “OVERHEIGHT PULL OVER”
 - Stage 3 message and barriers at the tunnel portal, this displays the message: “INCIDENT AHEAD TUNNEL CLOSED DO NOT PROCEED”
 - Stage 1b detection, message and barriers at the Maioro St on ramp, this displays the message “OVERHEIGHT RAMP CLOSED”
 - Stage 2b detection and message at Richardson Rd overpass, this displays the message “OVERHEIGHT PULL OVER”
 - Stage 3 message and barriers at the tunnel portal this displays the message: “INCIDENT AHEAD TUNNEL CLOSED DO NOT PROCEED”

Penrose Bridge Current State







WV-MNA-CAM101

“If you see the lights, you are over height”